

GT4 Installation

What's Included

Verify that your GT4 shipment contains the following parts:



GT4



12V Ungrounded Power Adapter



Back Panel Inserts
(May be already installed)

Installing the Time Clock

1. Remove the screw at bottom of front panel to separate the front panel from the back panel. Keep the screw for use in step 7.
2. If not done previously, install inserts into the back panel to prevent any dirt or debris from entering the terminal. Punch out any holes in the inserts for cable routing.
3. Using the GT4 back panel as a template, mark the location of the top mount hole on the wall. If necessary, mark the other three recommended mount holes on the wall.



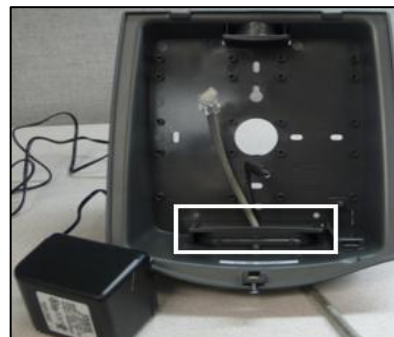
Top



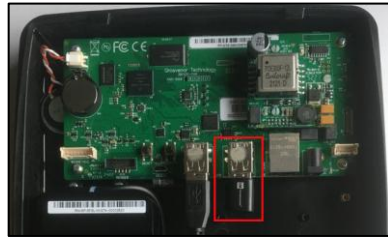
Bottom



4. Mount the back plate on the wall using the screw set, pass the Ethernet cable and power cable through holes punched out in the inserts, and clip the mouse-hole plate at the bottom of the back panel. The mouse hole can accommodate an Ethernet cable and power cable.



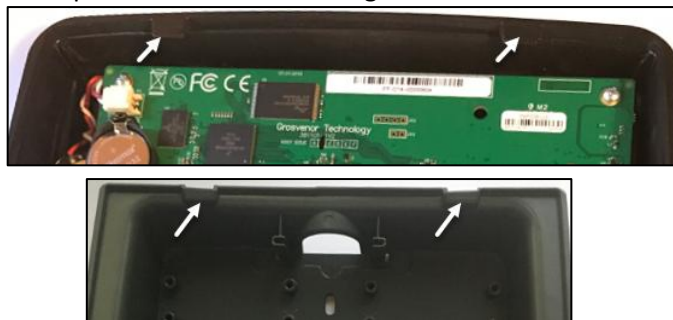
5. The WiFi adapter has plugged into the clock's USB port for a wireless network (WiFi) connection. Refer to *Configuring a Wireless Network* document for instructions on how to connect the clock to a wireless network.



6. To set up a wired network connection, plug in the Ethernet cable and power cable on the front panel.



7. Hook the tabs on the top of the front panel into the locating points in the back panel. Hinge down the front panel into its final position. Secure with single screw at bottom of front panel.



8. Once the GT4 is installed, plug the 12V power adapter into the power outlet and the Ethernet cord into the Ethernet port on the wall. The clock is ready for use.

